

MALDIVES LAND AND SURVEY AUTHORITY

MINISTRY OF HOUSING AND INFRASTRUCTURE
 Office (PABX): +(960) 3004300, Fax: +(960) 3004254
 Email: survey@housing.gov.mv
 Web: www.surveyofmaldives.gov.mv,
 Ameenee Magu, Maafannu, Male', 20392, Maldives



CONTROLPOINT DETAILS		Station Number	PSM 5274
Coordinate Information			
Geodetic		Grid	
WGS 84		UTM Zone 43	
Lat:	<input n"="" type="text" value="3° 37' 58.8342"/>	E:	<input type="text" value="273188.5427"/>
Long:	<input e"="" type="text" value="72° 57' 29.0070"/>	N:	<input type="text" value="401818.2879"/>
Ellp Height:		Orth Height:	<input type="text" value="1.242"/>
Island Name: ADH. VILAMENDHOO		Date: 8 Sep 2015	

Monument description & method of survey:

- Monument Type A as in Technical Brief (with a 0.3m X 0.3m X 1.0m Concrete Column)
- Stainless steel plate fixed to concrete by Four bolts
- Horizontal coordinates fixed by GNSS Static survey.
- Elevation reduced relative to Local MSL by double level run
- PSM 5274 is 100mm below ground Level

General site condition & access:

- Easily accessible area with wide angle of sky visibility
- Located in the vegetation line
- PSM Established on Southern side of Island, located near the supply jetty

Owner: Vilamendhoo Investments Pvt. Ltd



Bottom



North Height 1.6m / Distance 2m



East Height 1.6m / Distance 2m



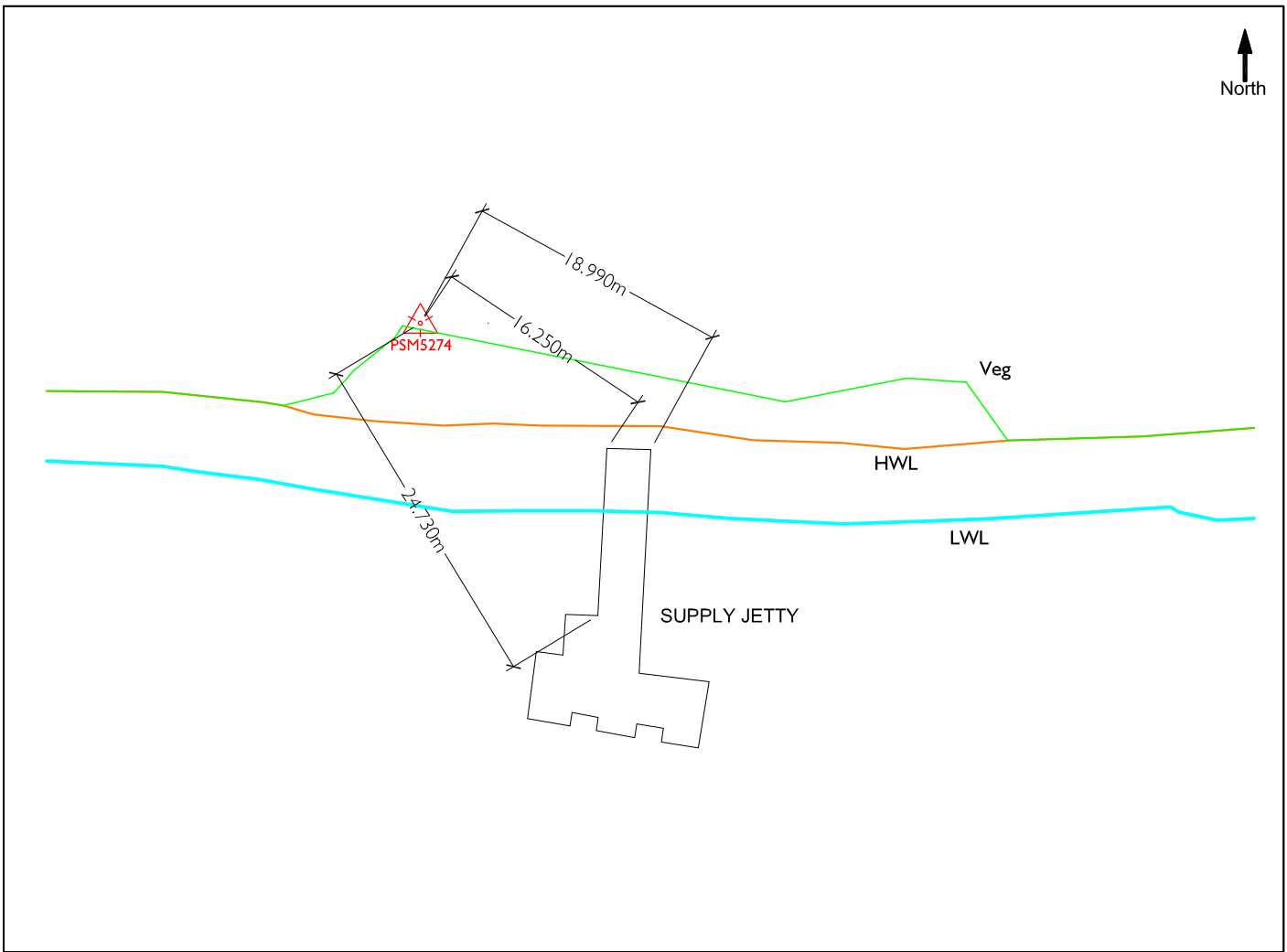
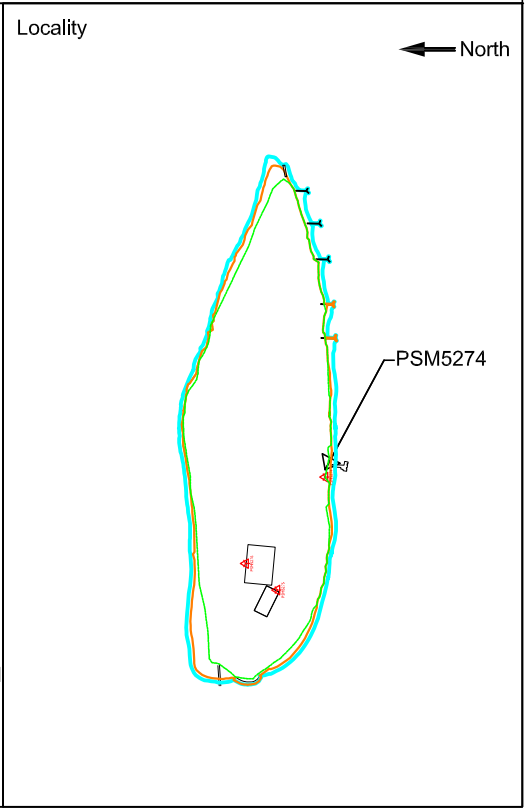
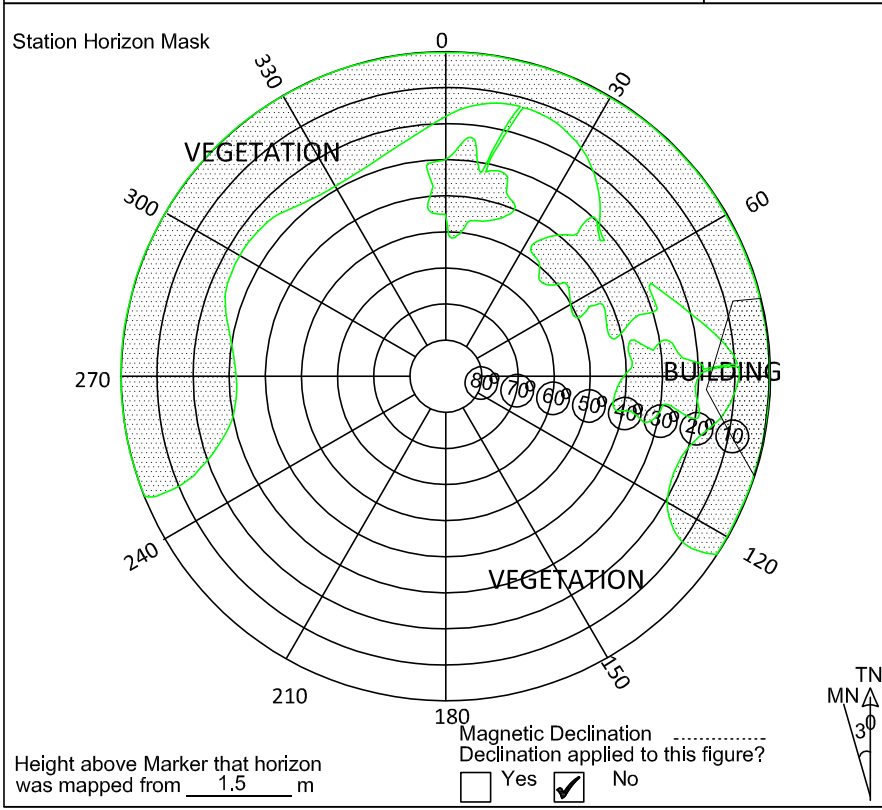
Up Height 1.6m



South Height 1.6m / Distance 2m



West Height 1.6m / Distance 2m



Sketched by: Abulho Scale: Date: 8 Sep 2015

MALDIVES LAND AND SURVEY AUTHORITY

MINISTRY OF HOUSING AND INFRASTRUCTURE
 Office (PABX): +(960) 3004300, Fax: +(960) 3004254
 Email: survey@housing.gov.mv
 Web: www.surveyofmaldives.gov.mv,
 Ameenee Magu, Maafannu, Male', 20392, Maldives



CONTROLPOINT DETAILS		Station Number	PSM 5275
Coordinate Information			
Geodetic		Grid	
WGS 84		UTM Zone 43	
Lat:	<input n"="" type="text" value="3° 38' 0.8862"/>	E:	<input type="text" value="273039.0634"/>
Long:	<input e"="" type="text" value="72° 57' 24.1598"/>	N:	<input type="text" value="401881.6725"/>
Ellp Height:		Orth Height:	<input type="text" value="1.364"/>
Island Name: ADH. VILAMENDHOO		Date: 8 Sep 2015	

Monument description & method of survey:

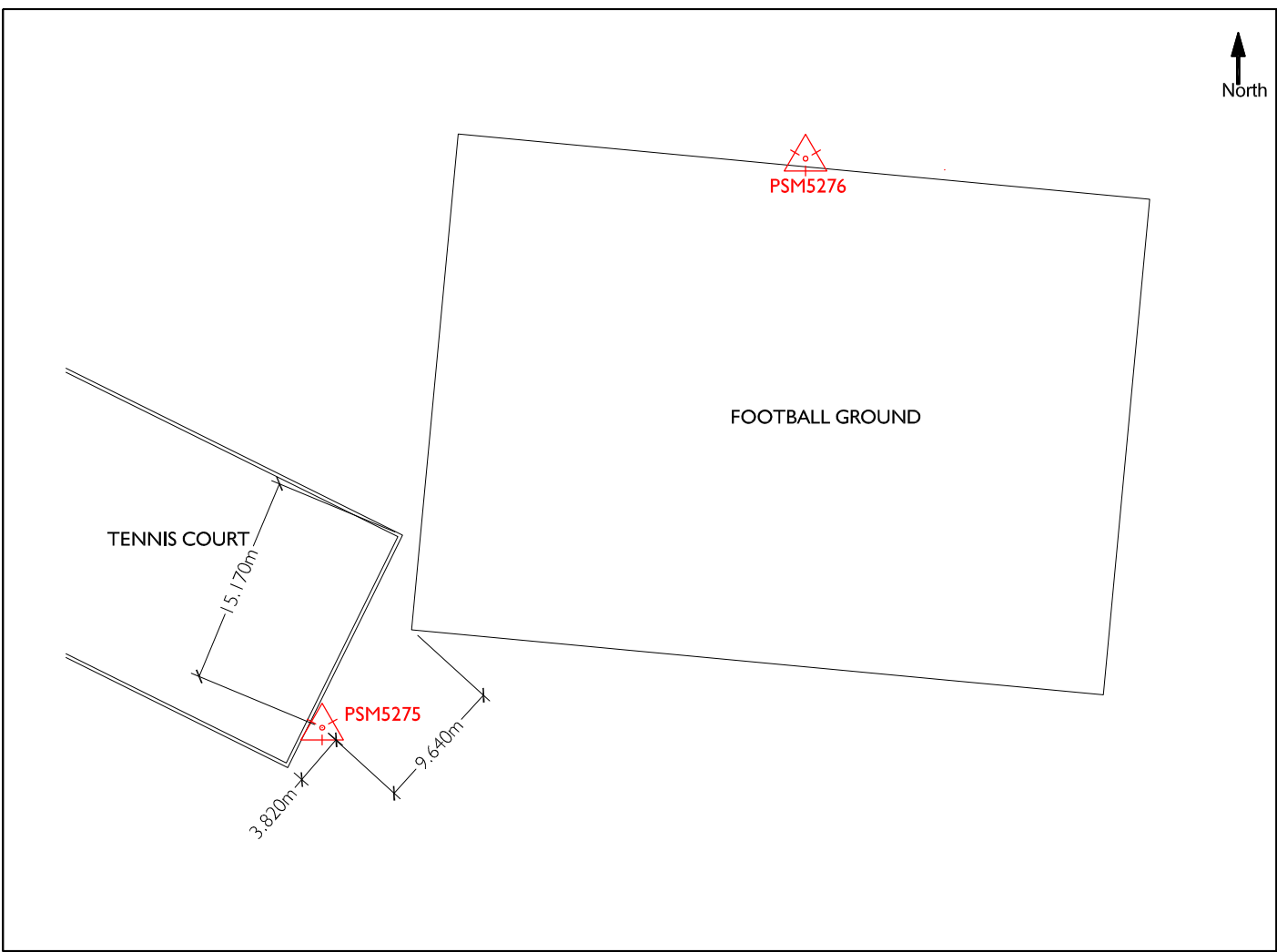
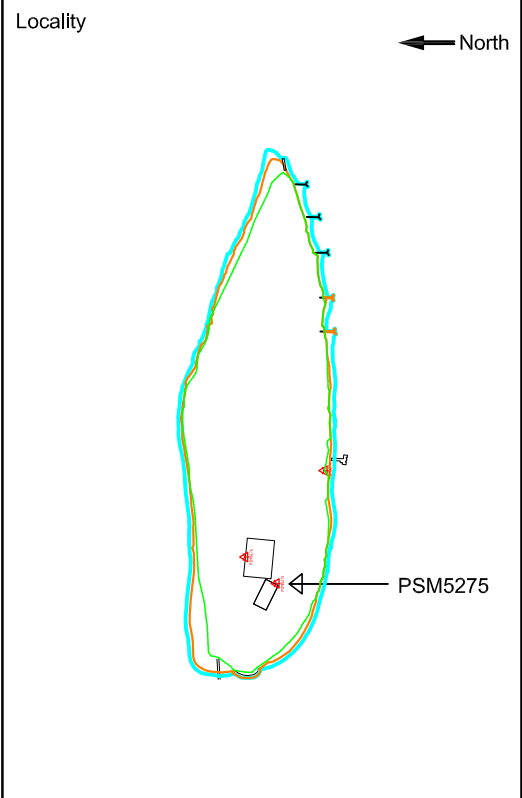
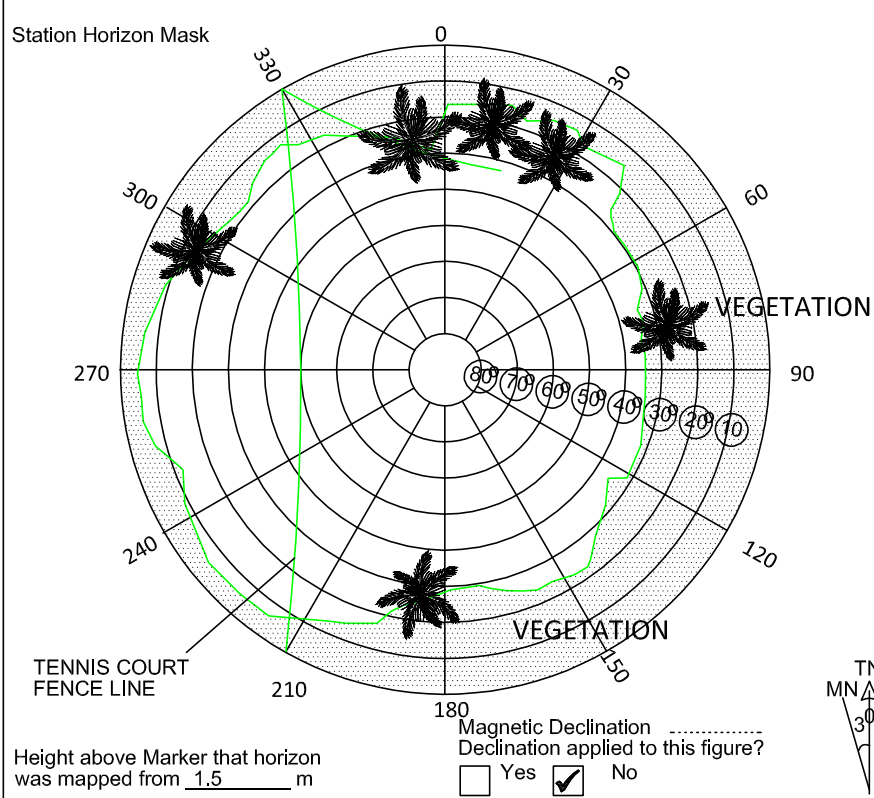
- Monument Type A as in Technical Brief (with a 0.3m X 0.3m X 1.0m Concrete Column)
- Stainless steel plate fixed to concrete by Four bolts
- Horizontal coordinates fixed by GNSS Static survey.
- A level double level run was recorded as PSM5276 as the base, vertical control level of PSM5275 was determined from the level circuit
- PSM5275 is 100mm below ground Level

General site condition & access:

- Easily accessible area with wide angle of sky visibility
- PSM located near the tennis court

Owner: Vilamendhoo Investments Pvt. Ltd

 <p>Bottom</p>	 <p>North Height 1.6m / Distance 2m</p>	 <p>East Height 1.6m / Distance 2m</p>
 <p>Up Height 1.6m</p>	 <p>South Height 1.6m / Distance 2m</p>	 <p>West Height 1.6m / Distance 2m</p>



Sketched by: Abulho Scale: Not to Scale Date: 8 Sep 2015

MALDIVES LAND AND SURVEY AUTHORITY

MINISTRY OF HOUSING AND INFRASTRUCTURE
 Office (PABX): +(960) 3004300, Fax: +(960) 3004254
 Email: survey@housing.gov.mv
 Web: www.surveyofmaldives.gov.mv,
 Ameenee Magu, Maafannu, Male', 20392, Maldives



CONTROLPOINT DETAILS		Station Number	PSM 5276
Coordinate Information			
Geodetic		Grid	
WGS 84		UTM Zone 43	
Lat:	<input n"="" type="text" value="3° 38' 2.2347"/>	E:	<input type="text" value="273074.1723"/>
Long:	<input e"="" type="text" value="72° 57' 25.2942"/>	N:	<input type="text" value="401923.0236"/>
Ellp Height:		Orth Height:	<input type="text" value="1.382"/>
Island Name: ADH. VILAMENDHOO		Date: 8 Sep 2015	

Monument description & method of survey:

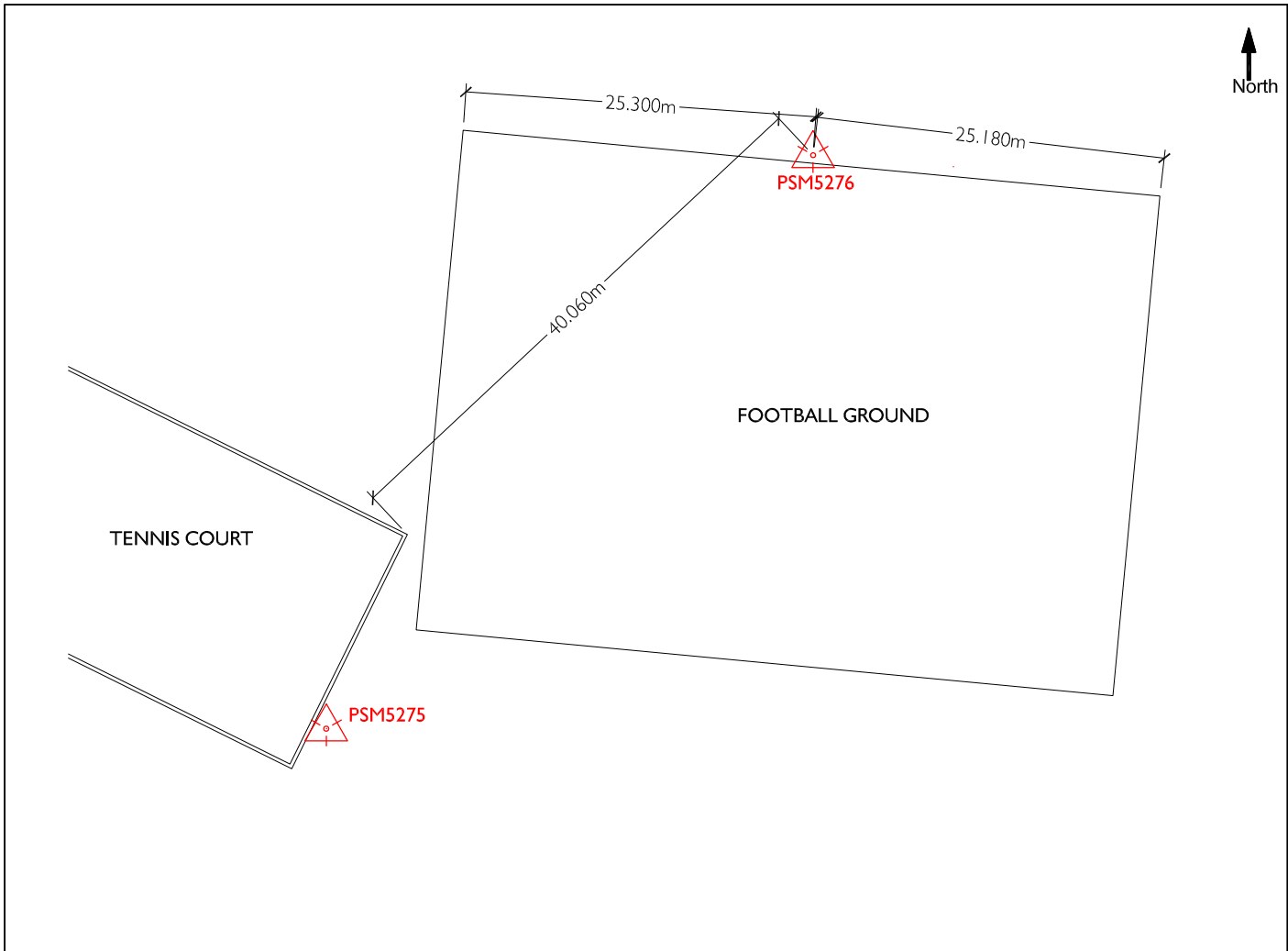
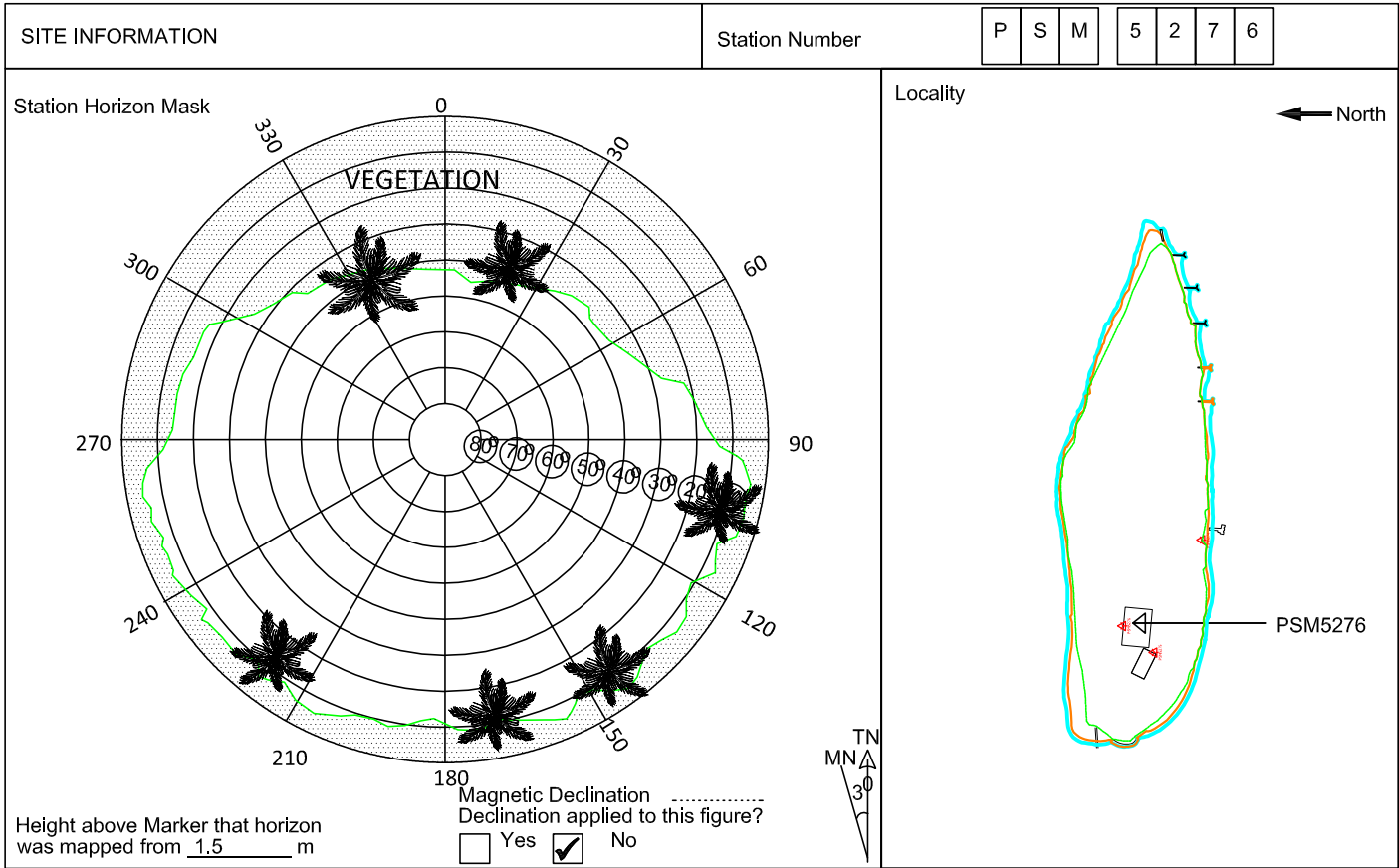
- Monument Type A as in Technical Brief (with a 0.3m X 0.3m X 1.0m Concrete Column)
- Stainless steel plate fixed to concrete by Four bolts
- Horizontal coordinates fixed by GNSS Static survey.
- A level double level run was recorded as PSM5274 as the base, vertical control level of PSM5276 was determined from the level circuit
- PSM5276 is 100mm below ground Level

General site condition & access:

- Easily accessible area with wide angle of sky visibility
- PSM located near football ground

Owner: Vilamendhoo Investments Pvt. Ltd

 <p>Bottom</p>	 <p>North Height 1.6m / Distance 2m</p>	 <p>East Height 1.6m / Distance 2m</p>
 <p>Up Height 1.6m</p>	 <p>South Height 1.6m / Distance 2m</p>	 <p>West Height 1.6m / Distance 2m</p>



Sketched by: Abulho Scale: Not to Scale Date: 8 Sep 2015